

Antykwa Toruńska

ver. 2.03

Van de redactie

Bij deze Maps vindt u een klein boekje dat dient ter promotie van het font Antykwa Toruńska, en de volgende pagina's van de Maps bevatten een aantal pagina's uit de documentatie die hoort bij de zojuist verschenen uitgebreidere versie van deze fontfamilie.

De tekst hieronder is een vertaling van de eerste pagina van de documentatie die volgt. Gezien de kwaliteit van het zetwerk vonden we het leuker om de documentatie op te nemen als facsimile, in plaats van het opnieuw te zetten in de Maps-stijl.

Antykwa Toruńska (wat 'Antieke van Torun' betekent) is een tweedelige fontfamilie ontworpen door Zygfryd Gardzielewski, een typograaf uit Toruń, Polen. Een paar mensen hebben samengewerkt aan het font gedurende de ontwerpfase in metaal. Het font wordt hoofdzakelijk gebruikt voor het zetten van kleine drukken. Zijn kenmerkende eigenschappen zijn het verwijden van de verticale stammen bij de bovenkant en de golvende vorm van enkele horizontale en diagonale lijnen alsook de schreven. Antykwa Toruńska werd voor het eerst gegoten in metaal in 1960, door de Grafmasz zetterij te Warschau. Het werd geproduceerd in een gewone, een halfvette en een schuine variant, in groottes van 6 tot 48 dd.

Ik begon met het digitaliseren van Antykwa Toruńska in begin 1995. De eerste, zeer slechte versie was gebaseerd op een fontcatalogus. Dat was een zeer onvolmaakte bron. De volgende versie was gebaseerd op fotokopieën van de originele ontwerptekeningen die mij door Zygfryd Gardzielewski ter beschikking werden gesteld, die ik daarvoor zeer dankbaar ben. Andrzej Tomaszewski, een bekende Poolse typograaf, maakte me ervan bewust dat ook deze versie van slechte kwaliteit was, omdat het te nauwgezet probeerde om een origineel te volgen dat in de pre-digitale era werd gecreëerd, dertig jaar geleden, gebruikmakend van een traditionele benadering.

Deze versie (1.0) mag gedigitaliseerd worden genoemd in zoverre dat zij exact was en bouwelementen in het gehele font hergebruikte. Ze werd vrijgegeven in 1998 en bestond (net als het origineel) in drie varianten: rechtop, vet en cursief.

De huidige distributie werd gemaakt met het METATYPE1 pakket door Bogusław Jackowski, Janusz M. Nowacki en Piotr Strzelczyk. Versie 2.01 bevat een zeer uitgebreide tekenset (bijvoorbeeld Cyrillisch, Grieks, de meestgebruikte wiskundige en monetaire symbolen, extra ligaturen), evenals extra varianten (licht, normaal, halfvet en vet in normale en versmalde vorm). Ik heb aparte sets van steeds 256 karakters in Type 1 gemaakt voor Windows en Linux (in diverse encodings), en volledige fontsets in TrueType en OpenType met meer dan 1060 tekens elk.

Heel wat mensen hebben mij grootmoedig geholpen tijdens het voorbereiden van deze versie van Antykwa Toruńska. Ik zou mijn dankbaarheid aan mevr. Janina Gradzielewska (de vrouw van Zygfryd Gardzielewski) willen uitdrukken, en aan Bogusław Jackowski, Andrzej Tomaszewski en Marcin Woliński. Jerzy Ludwichowski vertaalde dit document in het Engels. Zeer veel dank.

GUST

Grupa
Użytkowników
Systemu
T_EX

The Polish T_EX Users Group, GUST, supports initiatives leading to digitization of Polish traditional fonts. GUST also supports polonization of popular fonts published under GNU or GNU-like licences. The resulting fonts are freely available.

Antykwa Toruńska

ver. 2.03

Type designer: Zygfryd Gardzielewski, Toruń, Poland

Font author: Janusz Marian Nowacki, Grudziądz, Poland

April 2005



- Installing in a T_EX system 2
- Antykwa Toruńska in L^AT_EX 3
- Antykwa Toruńska in plain 4
- The package for T_EX 5
- Installing in a Windows system . . . 8
- Font contents 9
- The *qx* encoding 27
- The *ec* encoding 28
- The *texnansi* encoding 29
- The *greek* encoding 30
- The *wncy* encoding 31
- The *t2a* encoding 32
- The *t2b* encoding 33
- The *t2c* encoding 34
- The *cs* encoding 35
- The *t5* encoding 36
- The *exp* encoding 37

J.Nowacki@gust.org.pl
www.janusz.nowacki.strefa.pl



Zygfryd Gardzielewski
(1914–2001)

Antykwa Toruńska (meaning just “Antiqua of Torun”) is a two-element typeface designed by Zygfryd Gardzielewski, a typographer from Toruń (Thorn), Poland. A few people cooperated on the font during the metal type design phase. The font is mainly used for typesetting of small prints. Its characteristic features are the widening of vertical stems at the top and the wave-like form of some of the horizontal and diagonal lines as well as of the serifs. Antykwa Toruńska was first cast in metal in 1960 in the Grafmasz typefoundry in Warsaw. It was produced in the ordinary, semibold and slanted faces in sizes from 6 to 48 dd.

I began digitizing Antykwa Toruńska in early 1995. The first, very poor version was based on a font catalogue. It was a very imperfect source. The next version was based on photocopies of the original design drawings made available to me by Zygfryd Gardzielewski, to whom I am very grateful for this. Andrzej Tomaszewski, a well known Polish typographer, made me aware that this version was also of poor quality because it too closely tried to follow the original which was created in the pre-digital era, thirty years ago, using the traditional approach. Version 1.0, which deserves to be called computerised in that it was precise and reused character building elements across the font, was released in 1998 and comprised (similarly as the original) of three faces: upright, bold and italic.

The current distribution was generated using the METATYPE1 tools package authored by Bogusław Jackowski, Janusz M. Nowacki and Piotr Strzelczyk. Version 2.01 contains a greatly extended character set (e.g., cyrillic, greek, most often used mathematical symbols and currency symbols, additional ligatures), as well as additional typefaces (light, regular, medium and bold in normal and condensed widths).

I prepared separate Type 1 sets of 256 characters for Windows and Linux (in various encodings) and complete TrueType and OpenType font sets with over 1060 glyphs each.

A lot of people helped me generously in preparing this version of Antykwa Toruńska. I would like to express my gratitude to Mrs Janina Gradzielewska (Zygfryd Gardzielewski’s wife), Bogusław Jackowski, Andrzej Tomaszewski, Marcin Woliński. Jerzy Ludwichowski translated this document into English. Very many thanks.



A woodcut by Zygfryd
Gardzielewski.

INSTALLING IN A T_EX SYSTEM

CAUTION: the installation requires previous versions of Antykwa Toruńska to be uninstalled.

The Antykwa Toruńska PostScript font package (file AntykwaTorunska-tex-2_03.zip) for T_EX conforms to the T_EX Directory Structure (TDS) v. 1.1 which allows for an easy installation, e.g., in the popular T_EX Live distribution. It suffices to copy the doc, fonts and tex subdirectories into their counterparts in the global or local tree of your T_EX installation. In the next step one should add the font map name, e.g., antt.map to the web2c/updmap.cfg file and run the updmap program.

ABCabc
 ABCabc
 ABCabc
 ABCabc
 ABCabc
 ABCabc
 ABCabc
 ABCabc

The original, cast in lead Antykwa Toruńska was designed by Gardzielewski in only three variants: normal, semibold and italic. Now eight variants are available.

ABCabc
 ABCabc
 ABCabc
 ABCabc

The Condensed fonts are provided for special applications.

ABCABC
 ABCABC
 ABCABC
 ABCABC

A smallcaps variant is also available.

THE PACKAGE for T_EX

The complete distribution of Antykwa Toruńska for T_EX contains the following files in a TDS-conformant tree:

doc/fonts/antf/

- documentation and examples of use

fonts/enc/dvips/antf

- files with reencodings into different T_EX font layouts

fonts/map/dvips/antf

- the font mapping files (to be included – using the updmap program – in the global psfonts.map file used by the dvips program as well as the analogues for the pdftex and dvi_{pdfm} programs)

The .map files for the following encodings are included: ec, qx, texnansi, wncy, t2a, t2b, t2c, greek, cs, t5.

fonts/afm/public/antf

- metric files *.afm

fonts/tfm/public/antf

- metric files *.tfm for T_EX

▷ latin characters

(* denotes the encoding used: ec, cs, t5, qx or texnansi)

normal text fonts

- *-anttl – Antykwa Toruńska Light-Regular
- *-anttli – Antykwa Toruńska Light-Italic
- *-anttm – Antykwa Toruńska Medium-Regular
- *-anttmi – Antykwa Toruńska Medium-Italic
- *-anttr – Antykwa Toruńska Regular
- *-anttri – Antykwa Toruńska Italic
- *-anttb – Antykwa Toruńska Bold
- *-anttbi – Antykwa Toruńska BoldItalic

Caps text fonts

- *-anttlcap – Antykwa Toruńska Caps Light-Regular
- *-anttlicap – Antykwa Toruńska Caps Light-Italic
- *-anttmcap – Antykwa Toruńska Caps Medium-Regular
- *-anttmicap – Antykwa Toruńska Caps Medium-Italic
- *-anttrcap – Antykwa Toruńska Caps Regular
- *-anttricap – Antykwa Toruńska Caps Italic
- *-anttbcap – Antykwa Toruńska Caps Bold
- *-anttbicap – Antykwa Toruńska Caps BoldItalic

2 3 6 7 8 9
 2 3 6 7 8 9
 2 3 6 7 8 9
 2 3 6 7 8 9

Nautical ("old style") digits are built into the caps variants.

АБВабвГ
 АБВабвГ
 АБВабвГ
 АБВабвГ
 АБВабвг
 АБВабвг
 АБВабвг
 АБВабвг

All Antykwa Toruńska fonts contain the characters of the cyrillic alphabets. The "wncy" encoding allows the use of ASCII characters for text entry into the TeX source code. For L^AT_EX the "t2a", "t2b" and "t2c" encodings are used.

normal Condensed text fonts

- *-anttcl – Antykwa Toruńska Condensed Light-Regular
- *-anttcli – Antykwa Toruńska Condensed Light-Italic
- *-anttcmm – Antykwa Toruńska Condensed Medium-Regular
- *-anttcmmi – Antykwa Toruńska Condensed Medium-Italic
- *-anttcrr – Antykwa Toruńska Condensed Regular
- *-anttcrr-i – Antykwa Toruńska Condensed Italic
- *-anttcrrb – Antykwa Toruńska Condensed Bold
- *-anttcrrbi – Antykwa Toruńska Condensed BoldItalic

caps Condensed text fonts

- *-anttclcap – Antykwa Toruńska Condensed Caps Light-Regular
- *-anttclicap – Antykwa Toruńska Condensed Caps Light-Italic
- *-anttcmmcap – Antykwa Toruńska Condensed Caps Medium-Regular
- *-anttcmmicap – Antykwa Toruńska Condensed Caps Medium-Italic
- *-anttcrrcap – Antykwa Toruńska Condensed Caps Regular
- *-anttcrricap – Antykwa Toruńska Condensed Caps Italic
- *-anttcrrbcap – Antykwa Toruńska Condensed Caps Bold
- *-anttcrrbicap – Antykwa Toruńska Condensed Caps BoldItalic

▷ Cyrillic characters

(* denotes the encoding used: wncy, t2a, t2b or t2c)

text fonts

- *-anttl – Antykwa Toruńska Cyrillic Light-Regular
- *-anttli – Antykwa Toruńska Cyrillic Light-Italic
- *-anttm – Antykwa Toruńska Cyrillic Medium-Regular
- *-anttmi – Antykwa Toruńska Cyrillic Medium-Italic
- *-anttr – Antykwa Toruńska Cyrillic Regular
- *-anttri – Antykwa Toruńska Cyrillic Italic
- *-anttb – Antykwa Toruńska Cyrillic Bold
- *-anttbi – Antykwa Toruńska Cyrillic BoldItalic

Condensed text fonts

- *-anttcl – Antykwa Toruńska Condensed Cyrillic Light-Regular
- *-anttcli – Antykwa Toruńska Condensed Cyrillic Light-Italic
- *-anttcmm – Antykwa Toruńska Condensed Cyrillic Medium-Regular
- *-anttcmmi – Antykwa Toruńska Condensed Cyrillic Medium-Italic
- *-anttcrr – Antykwa Toruńska Condensed Cyrillic Regular
- *-anttcrr-i – Antykwa Toruńska Condensed Cyrillic Italic
- *-anttcrrb – Antykwa Toruńska Condensed Cyrillic Bold
- *-anttcrrbi – Antykwa Toruńska Condensed Cyrillic BoldItalic

ΣΩαβγδ
 ΣΩαβγδ
 ΣΩαβγδ
 ΣΩαβγδ
 ΣΩαβγδ
 ΣΩαβγδ
 ΣΩαβγδ
 ΣΩαβγδ

Antykwa Toruńska contains all characters from the basic greek alphabet. I do not provide the alternative characters known as the “polytonic” characters.

ABC abc

123 ⇐ ⇒ ↑↑
 ↓↓ ♣ ♠ ♥
 ◇ ≫ > ≥
 ∈ ↓ ↗ ↘
 ↖ ∩ ⊕ ⊗
 ⊙ † e

Antykwa Toruńska fonts contain also mathematical characters and various other symbols. They are not covered in the standard encoding tables. The fonts with the “exp” (expert) prefix were created to enable the use of such symbols.

▷ greek characters (coded as cp1253)

normal fonts

greek-anttl – Antykwa Toruńska Greek Light-Regular
 greek-anttli – Antykwa Toruńska Greek Light-Italic
 greek-anttm – Antykwa Toruńska Greek Medium-Regular
 greek-anttmi – Antykwa Toruńska Greek Medium-Italic
 greek-antr – Antykwa Toruńska Greek Regular
 greek-antri – Antykwa Toruńska Greek Italic
 greek-anttb – Antykwa Toruńska Greek Bold
 greek-anttbi – Antykwa Toruńska Greek BoldItalic

Condensed fonts

greek-anttcl – Antykwa Toruńska Condensed Greek Light-Regular
 greek-anttcli – Antykwa Toruńska Condensed Greek Light-Italic
 greek-anttcm – Antykwa Toruńska Condensed Greek Medium-Regular
 greek-anttcmi – Antykwa Toruńska Condensed Greek Medium-Italic
 greek-anttcr – Antykwa Toruńska Condensed Greek Regular
 greek-anttcricri – Antykwa Toruńska Condensed Greek Italic
 greek-anttcrcb – Antykwa Toruńska Condensed Greek Bold
 greek-anttcrcbi – Antykwa Toruńska Condensed Greek BoldItalic

▷ The Expert fonts (nonstandard encoding)

exp-anttcl – Antykwa Toruńska Exp Light-Regular
 exp-anttcli – Antykwa Toruńska Exp Light-Italic
 exp-anttcm – Antykwa Toruńska Exp Medium-Regular
 exp-anttcmi – Antykwa Toruńska Exp Medium-Italic
 exp-anttcr – Antykwa Toruńska Exp Regular
 exp-anttcricri – Antykwa Toruńska Exp Italic
 exp-anttcrcb – Antykwa Toruńska Exp Bold
 exp-anttcrcbi – Antykwa Toruńska Exp BoldItalic

fonts/type1/public/antf

- the complete (each with over 1060 glyphs) PostScript files *.pfb, used by the T_EX system drivers.

tex/latex/antf

- *.sty or *.fd files for L^AT_EX users prepared by Petr Olšák and Marcin Woliński

tex/plain/antf

- *.tex files prepared by Petr Olšák

L^AT_EX source:

```
\textsc{If one examines
\textbf{subcapitalist}
deconstructivist} theory, one
is faced with a choice: either
reject \textbf{Debordist
situation or \textsc{conclude
that reality must come from the
\textit{masses}}}, but only if
the premise of postsemantic
theory is invalid; otherwise,
\textit{Bataille's model
\textbf{of cultural}narrative
is one of "capitalist
discourse", and hence
intrinsically elitist.}
```

```
\usepackage{anttor}
```

IF ONE EXAMINES **SUBCAPITALIST** DECONSTRUCTIVIST theory, one is faced with a choice: either reject **Debordist situation** or **CONCLUDE THAT REALITY MUST COME FROM THE masses**, but only if the premise of postsemantic theory is invalid; otherwise, *Bataille's model of cultural narrative is one of "capitalist discourse", and hence intrinsically elitist.*

```
\usepackage[light]{anttor}
```

IF ONE EXAMINES **SUBCAPITALIST** DECONSTRUCTIVIST theory, one is faced with a choice: either reject **Debordist situation** or **CONCLUDE THAT REALITY MUST COME FROM THE masses**, but only if the premise of postsemantic theory is invalid; otherwise, *Bataille's model of cultural narrative is one of "capitalist discourse", and hence intrinsically elitist.*

```
\usepackage[condensed]
{anttor}
```

IF ONE EXAMINES **SUBCAPITALIST** DECONSTRUCTIVIST theory, one is faced with a choice: either reject **Debordist situation** or **CONCLUDE THAT REALITY MUST COME FROM THE masses**, but only if the premise of postsemantic theory is invalid; otherwise, *Bataille's model of cultural narrative is one of "capitalist discourse", and hence intrinsically elitist.*

```
\usepackage[light,
condensed]{anttor}
```

IF ONE EXAMINES **SUBCAPITALIST** DECONSTRUCTIVIST theory, one is faced with a choice: either reject **Debordist situation** or **CONCLUDE THAT REALITY MUST COME FROM THE masses**, but only if the premise of postsemantic theory is invalid; otherwise, *Bataille's model of cultural narrative is one of "capitalist discourse", and hence intrinsically elitist.*

ANTYKWA TORUŃSKA IN L^AT_EX

1. AS THE DEFAULT DOCUMENT FONT.

To make ANTYKWA TORUŃSKA the default font for the current document is easily done with the `anttor` package. Antykwa Toruńska is available in a number of layouts (character sets). The typesetting of English language documents can be done with the default OT1 encoding. Encodings in T1, T2 variants and OT2 are also available. Typesetting of Polish language documents can be done by enabling the OT4 layout (e.g., by loading the `polski` package). A richer subset of the font repertoire is available through the use of the QX layout:

```
\usepackage{polski,anttor}
\usepackage[QX]{fontenc}
```

Moreover, when calling the `anttor` package the options `light` and/or `condensed` are available to request the light and/or condensed variants of the type, respectively. The result of the standard directives `\textit`, `\textbf`, `\textsc` and their combinations for different package loading options is shown on the left.

2. IN DOCUMENT FRAGMENTS.

The L^AT_EX name for ANTYKWA TORUŃSKA is `antt`. To typeset a text fragment with Antykwa the following commands are sufficient (no packages need to be loaded, Latin Modern is the default font):

```
If one examines subcapitalist deconstructivist theory, one
is faced with a choice: either reject Debordist situation or
{\fontfamily{antt}\selectfont conclude that reality must come
from the masses}, but only if the premise
```

```
If one examines subcapitalist deconstructivist theory, one is
faced with a choice: either reject Debordist situation or conclude
that reality must come from the masses, but only if the premise
```

The light and/or condensed variants may be obtained by giving relevant arguments to `\fontseries`:

```
If one examines subcapitalist deconstructivist theory, one
is faced with a choice: either reject Debordist situation or
{\fontfamily{antt}\fontseries{1}\selectfont conclude that
reality must come {\fontseries{bc}\selectfont
from the masses}, but only if the premise
```

```
If one examines subcapitalist deconstructivist theory, one is
faced with a choice: either reject Debordist situation or conclude
that reality must come from the masses, but only if the premise
```

It is easier to use the *family* name to select the light and/or condensed variants:

```
antt    normal
anttl   light
anttc   condensed
anttlc  light condensed
```

The description of the `\fontfamily` and `\fontseries` commands can be found in the `fntguide.tex` document which is distributed with L^AT_EX.

It is worthwhile to get familiar with Petr Olsák's OFS package. It immensely eases font handling in plain and L^AT_EX documents. Here is an example of how to use OFS:

```
% input the package
\input ofs [pantyk]
% or in LATEX
\usepackage [pantyk] {ofs}
% Cork encoding
\def\otenc{8t}
% define the document
% default font
\setfonts
    [AntykwaToruńska/9pt]
```

Antykwa Toruńska with OFS can be used as the default font in the following eight variants: {\lr Light}, Regular, {\mr Medium}, {\bf Bold}, {\li Light Italic}, {\it Italic}, {\mi Medium Italic}, {\bi Bold Italic}.

Antykwa Toruńska with OFS can be used as the default font in the following eight variants: *Light*, *Regular*, *Medium*, *Bold*, *Light Italic*, *Italic*, *Medium Italic*, *Bold Italic*.

Additional font variants can be defined, e.g.:

```
% Caps font Medium
\fontdef\cscmr
[AntykwaToruńskaCaps-mr/9pt]
% Title font Light
\fontdef\ttitle [!-lr/16pt]
% Small font Regular
\fontdef\small [!/6pt]
```

The OFS package can do a lot more. I encourage you to read the documentation:

<ftp://math.feld.cvut.cz/pub/olsak/ofs/>

ANTYKWA TORUŃSKA IN PLAIN

The standard font declarations in the plain format look like this:

```
\font\rm qx-anttr at 9pt
\font\bf qx-anttb at 9pt
\font\it qx-anttri at 9pt
```

Now, the declared fonts might be used as follows:

```
\rm If one examines subcapitalist deconstructivist theory, one
is faced with a~choice: {\it either reject Debordist situation
or conclude that reality must come} from the masses, {\bf but
only if the premise of postsemantic theory is invalid};
otherwise, Bataille's model of cultural
```

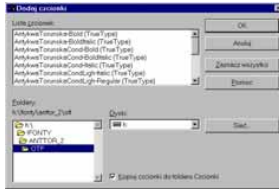
```
If one examines subcapitalist deconstructivist theory, one is faced with
a choice: either reject Debordist situation or conclude that reality must
come from the masses, but only if the premise of postsemantic theory is
invalid; otherwise, Bataille's model of cultural
```

For special purposes more elaborate macro definitions might be employed, e.g.:

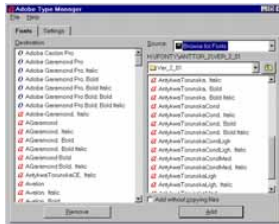
```
\newdimen\sizeoffont
\def\declarefont#1#2{% #1: TeX name; #2: TFM file name
\expandafter\def\csname #1\endcsname
{\expandafter\afterassignment\csname #1_\endcsname
\sizeoffont=%}
\expandafter\def\csname #1_\endcsname
{\font\currfont #2 at \sizeoffont\relax \currfont}%
\baselineskip=1.2\sizeoffont
}
\declarefont{anttn}{qx-anttr}
\declarefont{anttb}{qx-anttb}
\declarefont{antti}{qx-anttri}
```

which in the text look like this:

```
\anttn9pt If one examines subcapitalist deconstructivist
theory, one is faced with a~choice: {\antti9pt either reject
Debordist situation or conclude that reality must come} from
the masses, {\anttb9pt but only if the premise of postsemantic
theory is invalid}; otherwise, Bataille's model of cultural
```



The MS Windows dialog window "Adding fonts"



The ATM (Adobe Type Manager) dialog window for managing PostScript fonts.



Selecting font features in the InDesign program.

INSTALLING IN WINDOWS SYSTEMS

1. WINDOWS XP

True Type fonts (from AntykwaTorunska-ttf-2_03.zip) and OpenType (from AntykwaTorunska-otf-2_03.zip) with the complete font set can be installed in the fonts dialog window: *Start* → *Settings* → *Control Panel* → *Fonts*.

Thanks to Unicode, typesetting in languages based on the latin, cyrillic and greek alphabets is possible. Mathematical characters and symbols, nautical digits and small caps are also available. Following features are built into OpenType fonts:

- sups – *Superior*
- sinf – *Inferior*
- numr – *Numerators*
- dnom – *Denominators*
- cpsp – *Capital Spacing*
- onum – *Old Style Numerals*
- smcp – *Small Capitals*
- liga – *Standard Ligatures*
- dlig – *Discretionary Ligatures*
- frac – *Fractions*

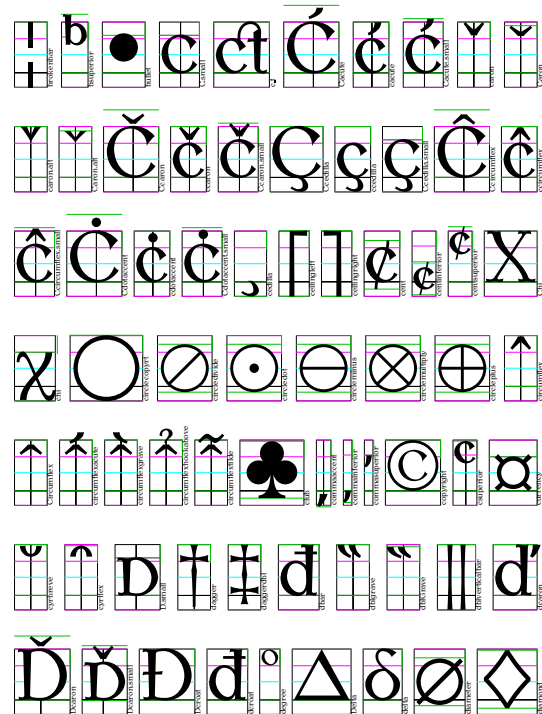
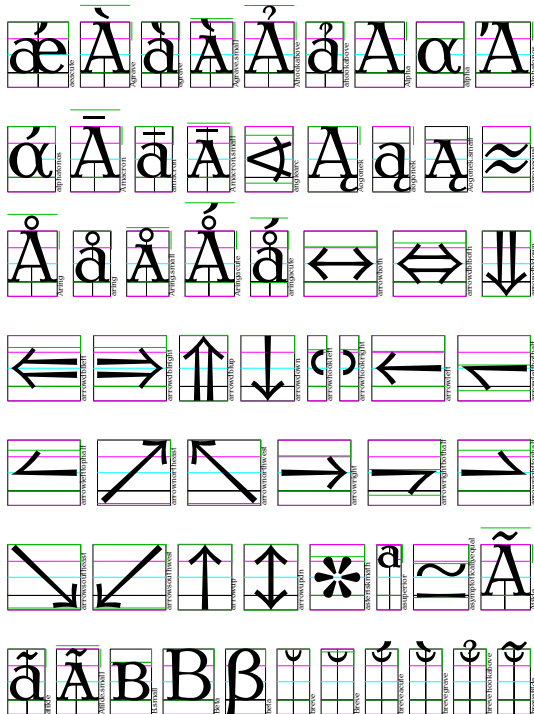
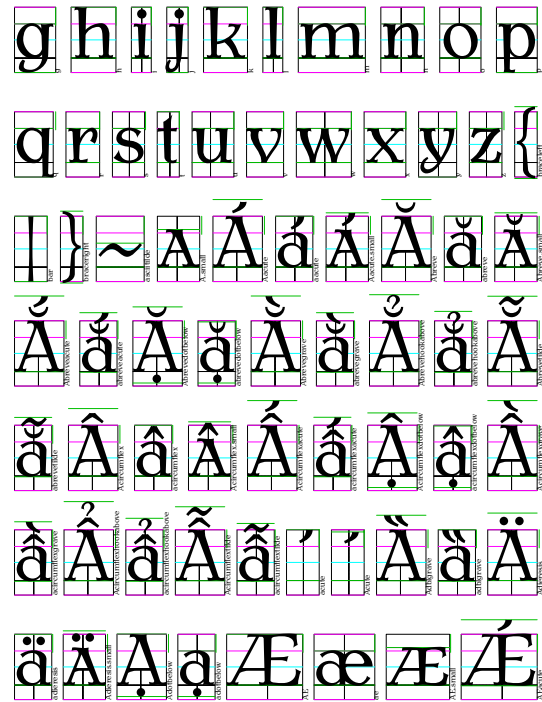
The availability of these features depends upon application support, e.g., the Adobe InDesign program offers all of them.

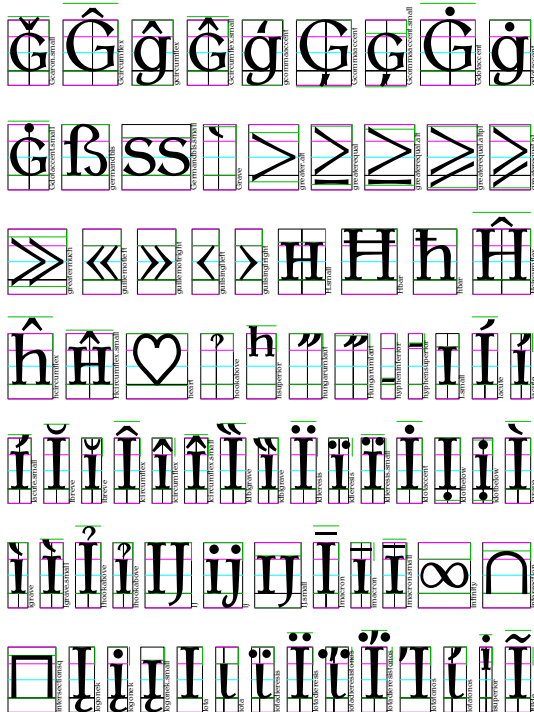
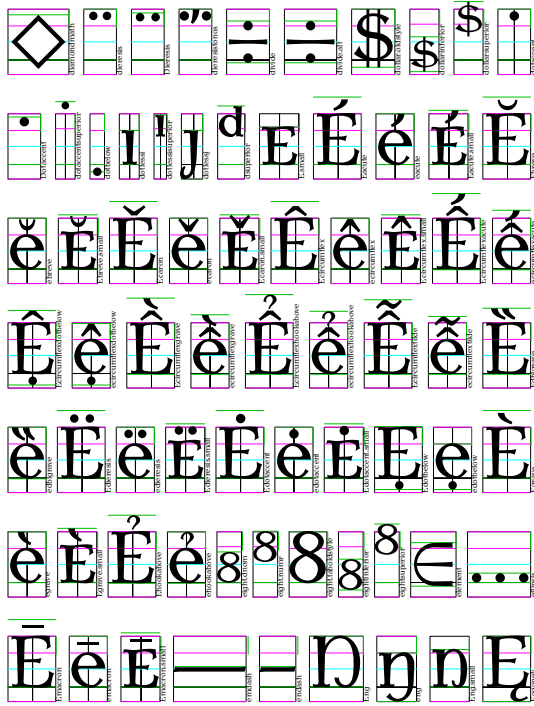
2. WINDOWS 98 and older versions

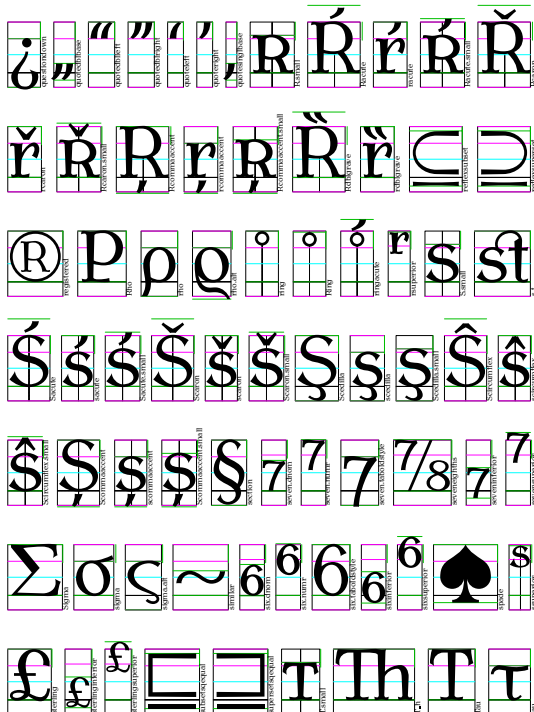
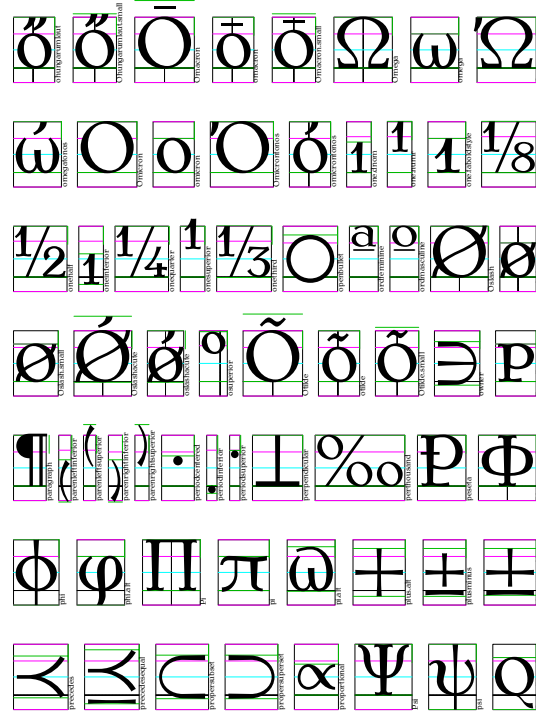
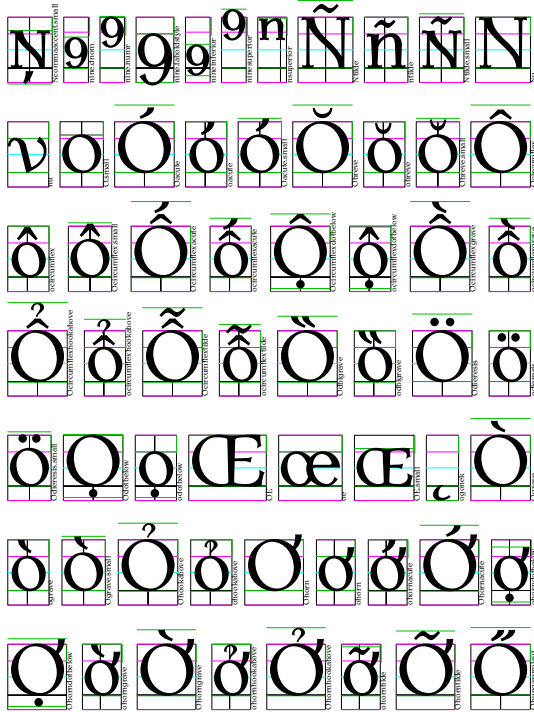
The True Type fonts (.ttf) may be installed in a similar manner. For the installation of Type 1 fonts (file AntykwaTorunska-type1-2_03.zip) the Adobe Type Manager program which manages PostScript fonts is required. These fonts contain 256 characters each in the following encodings: standard encoding, standard encoding small caps, cp1250, cp1250 small caps, qx, qx small caps, cp1253, cyrylic. I do not recommend OpenType fonts with this operating systems as there is no adequate multilanguage support.

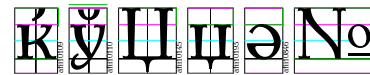
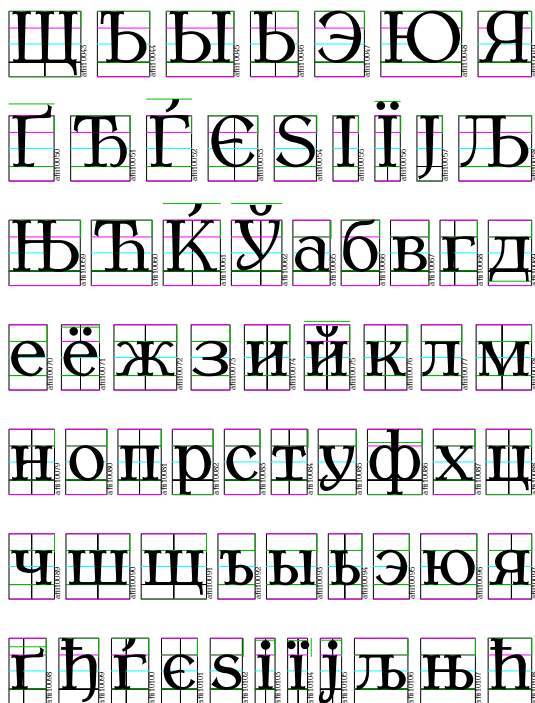
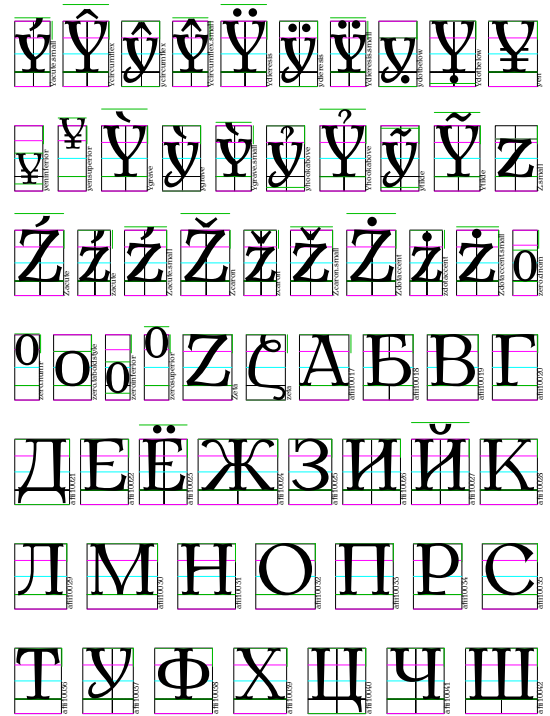
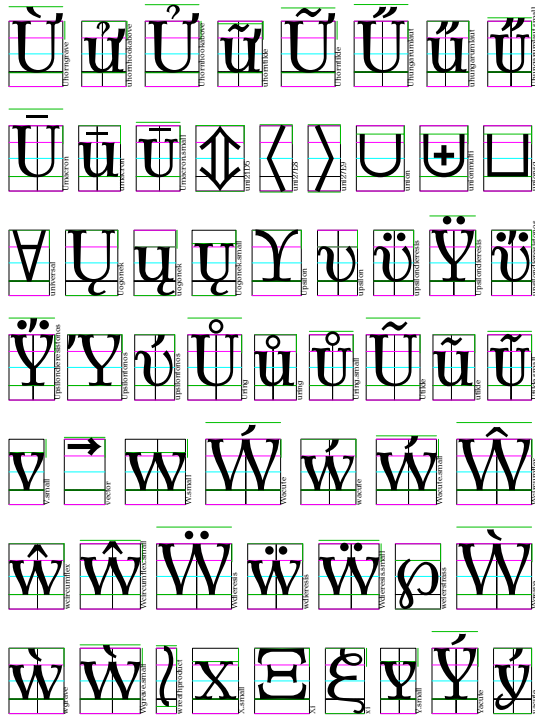
3. Other operating systems

Antykwa Toruńska fonts can also be installed in and used with those operating systems which support the OpenType format, as e.g., Linux (X-Window version 4 and higher) or Apple Mac OS (version X and higher).









Characters in the qx-anttr font, with decimal codes:

0: α	1: Δ	2: β	3: δ	4: π	5: Π	6: Σ	7: μ	8: ...
9: fk	10: Ω	11: ff	12: fi	13: fl	14: ffi	15: ffl	16: ı	17: j
18: `	19: ´	20: ˇ	21: ˘	22: ˙	23: °	24: ˘	25: ß	26: æ
27: œ	28: ø	29: Æ	30: Œ	31: Ø	32:	33: !	34: "	35: #
36: \$	37: %	38: &	39: ´	40: (41:)	42: *	43: +	44: ,
45: -	46: .	47: /	48: 0	49: 1	50: 2	51: 3	52: 4	53: 5
54: 6	55: 7	56: 8	57: 9	58: :	59: ;	60: j	61: =	62: ÿ
63: ?	64: @	65: A	66: B	67: C	68: D	69: E	70: F	71: G
72: H	73: I	74: J	75: K	76: L	77: M	78: N	79: O	80: P
81: Q	82: R	83: S	84: T	85: U	86: V	87: W	88: X	89: Y
90: Z	91: [92: “	93:]	94: ^	95: ´	96: ´	97: a	98: b
99: c	100: d	101: e	102: f	103: g	104: h	105: i	106: j	107: k
108: l	109: m	110: n	111: o	112: p	113: q	114: r	115: s	116: t
117: u	118: v	119: w	120: x	121: y	122: z	123: –	124: —	125: ˆ
126: ˜	127: ¨	128: €	129: Å	130: Ć	131: >	132: ≥	133: ≈	134: Ę
135: Į	136: <	137: ≤	138: Ł	139: Ń	140: ~	141: ^	142:	143: †
144: ‡	145: Ś	146: Š	147: Ş	148: °	149: †	150: ĸ	151: Ū	152: Ÿ
153: Ž	154: Ž	155: Ž	156: IJ	157: {	158: }	159: §	160:	161: q
162: ć	163: ®	164: ©	165: ÷	166: ě	167: ĭ	168: –	169: ×	170: ł
171: ń	172: ±	173: ∞	174: «	175: »	176: ¶	177: ś	178: š	179: ş
180: ●	181: †	182: —	183: ů	184: ÿ	185: ž	186: ž	187: ž	188: ij
189: ·	190: "	191: ´	192: Ä	193: Á	194: Â	195: Ã	196: Ä	197: Å
198: \	199: Ç	200: È	201: É	202: Ê	203: Ë	204: Ì	205: Í	206: Î
207: Ĩ	208: Đ	209: Ñ	210: Ò	211: Ó	212: Ô	213: Õ	214: Ö	215: o
216: ‰	217: Ù	218: Ú	219: Û	220: Ü	221: Ý	222: Þ	223:	224: à
225: á	226: â	227: ã	228: ä	229: å	230: _	231: ç	232: è	233: é
234: ê	235: ë	236: ì	237: í	238: î	239: ï	240: ð	241: ñ	242: ò
243: ó	244: ô	245: õ	246: ö	247: ç	248: ø	249: ù	250: ú	251: û
252: ü	253: ý	254: þ	255: „					

Characters in the cork-anttr font, with decimal codes:

0: `	1: ´	2: ^	3: ~	4: ¨	5: ¨	6: °	7: ˇ	8: ˇ
9: ˘	10: ˙	11: ˘	12: ˘	13: ,	14: <	15: >	16: “	17: ”
18: „	19: «	20: »	21: –	22: —	23:	24:	25: ı	26: j
27: ff	28: fi	29: fl	30: ffi	31: ffl	32:	33: l	34: "	35: #
36: \$	37: %	38: &	39: ´	40: (41:)	42: *	43: +	44: ,
45: -	46: .	47: /	48: 0	49: 1	50: 2	51: 3	52: 4	53: 5
54: 6	55: 7	56: 8	57: 9	58: :	59: ;	60: <	61: =	62: >
63: ?	64: @	65: A	66: B	67: C	68: D	69: E	70: F	71: G
72: H	73: I	74: J	75: K	76: L	77: M	78: N	79: O	80: P
81: Q	82: R	83: S	84: T	85: U	86: V	87: W	88: X	89: Y
90: Z	91: [92: \	93:]	94: ^	95: _	96: ´	97: a	98: b
99: c	100: d	101: e	102: f	103: g	104: h	105: i	106: j	107: k
108: l	109: m	110: n	111: o	112: p	113: q	114: r	115: s	116: t
117: u	118: v	119: w	120: x	121: y	122: z	123: {	124:	125: }
126: ~	127:	128: Ā	129: Ą	130: Ć	131: Ĉ	132: Ď	133: Ě	134: Ę
135: Ğ	136: Ĺ	137: Ł	138: Ł	139: Ń	140: Ň	141: D	142: Ő	143: Ŕ
144: Ŗ	145: Ś	146: Š	147: Ş	148: Ţ	149: Ŧ	150: Ů	151: Ű	152: Ÿ
153: Ž	154: Ž	155: Ž	156: IJ	157: Ī	158: d	159: §	160: ä	161: a
162: é	163: ċ	164: đ	165: ě	166: e	167: ğ	168: Í	169: ĩ	170: ł
171: ń	172: ñ	173: ŋ	174: ő	175: ı	176: ř	177: ś	178: š	179: ş
180: ƒ	181: †	182: ũ	183: û	184: ŷ	185: z	186: ž	187: ž	188: ij
189: j	190: ĳ	191: £	192: À	193: Á	194: Â	195: Ã	196: Ä	197: Å
198: Æ	199: Ç	200: È	201: É	202: Ê	203: Ë	204: Ì	205: Í	206: Î
207: Ĩ	208: Đ	209: Ñ	210: Ò	211: Ó	212: Ô	213: Õ	214: Ö	215: Œ
216: Ø	217: Ù	218: Ú	219: Û	220: Ü	221: Ý	222: Þ	223:	224: à
225: á	226: â	227: ã	228: ä	229: å	230: æ	231: ç	232: è	233: é
234: ê	235: ë	236: ì	237: í	238: î	239: ï	240: ð	241: ñ	242: ò
243: ó	244: ô	245: õ	246: ö	247: œ	248: ø	249: ù	250: ú	251: û
252: ü	253: ý	254: þ	255: ß					